

EMpower Graphical Tools



- Times Series and Spectra
- General Features
- Toolbar Description
- Edit Cross Powers
- Polar Editor Features
- Time Series Editor Features

Time Series / Spectra

(Basic graphics)

Recording Library

1. Select:

- a Click a recording from the timeline
- b Click a recording from the map
- c Click a recording from recording list

2. Time Series / Spectra

a Mode

- Time Series
- Spectra

b Data Type

- TD_150 - 150Hz
- TD_2400 - 2,400Hz
- TD_24K - 24,000Hz
- TD_96K - 96,000Hz

c Unify Vertical Scale by

- Do not unify
- Full range
- By channel

d Navigation buttons

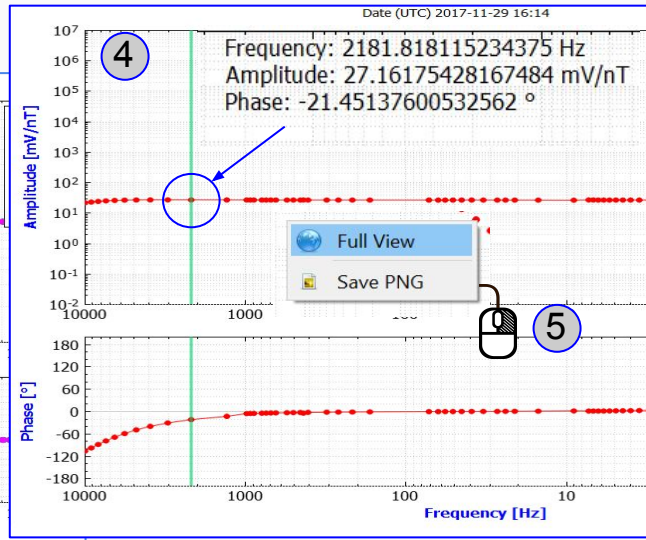
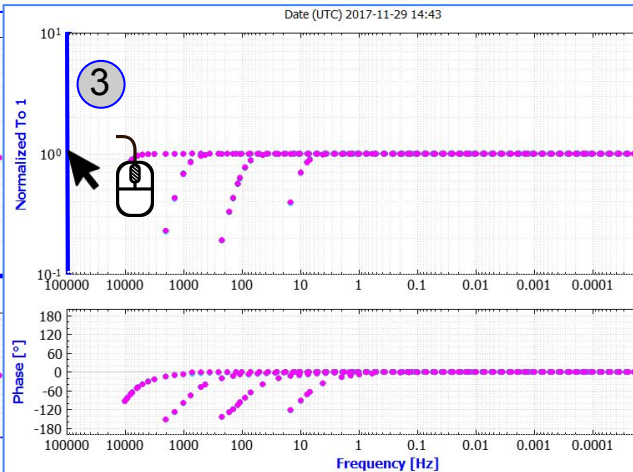
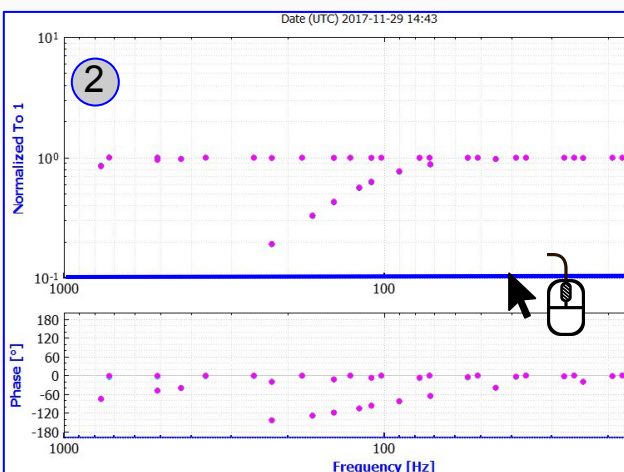
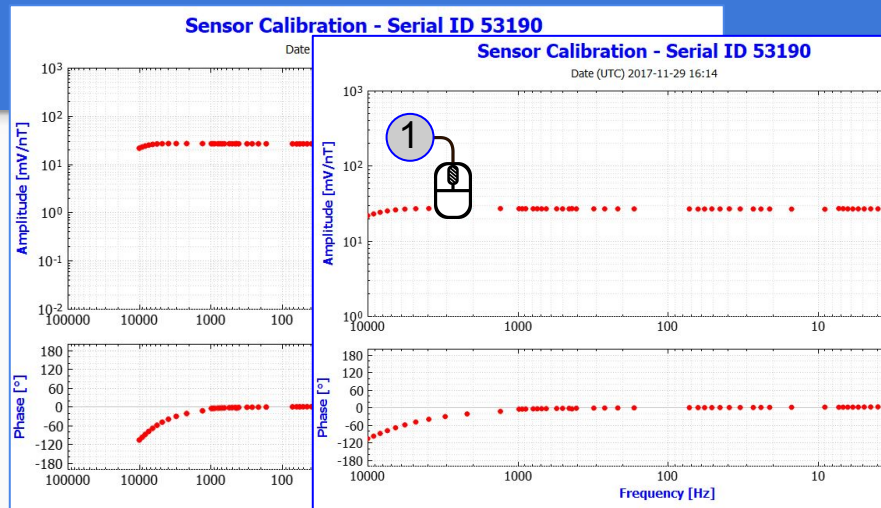
- e Zoom in/out using the scroll wheel will
Zoom (X axis).



General Features

1. Zoom in/out using the scroll wheel will zoom on Y and X axis.
2. Clicking X-axis (highlighted in blue) to zoom in/out using the scroll wheel will zoom on X-axis only.
3. Clicking Y-axis (highlighted in blue) to zoom in/out using the scroll wheel will zoom on Y-axis only.
4. View information about a selected point (use the arrow keys to move between points). * *this information may be different depending on the plot*
5. Right click on the plot, and select Full View or export PNG file

**Do not apply to Time Series and Spectra*

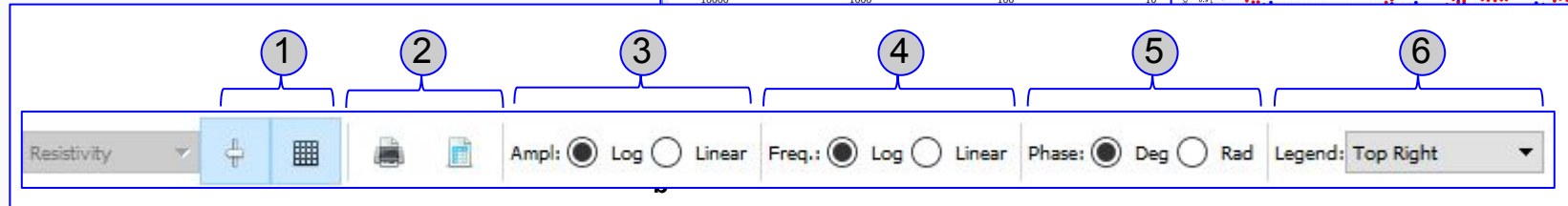
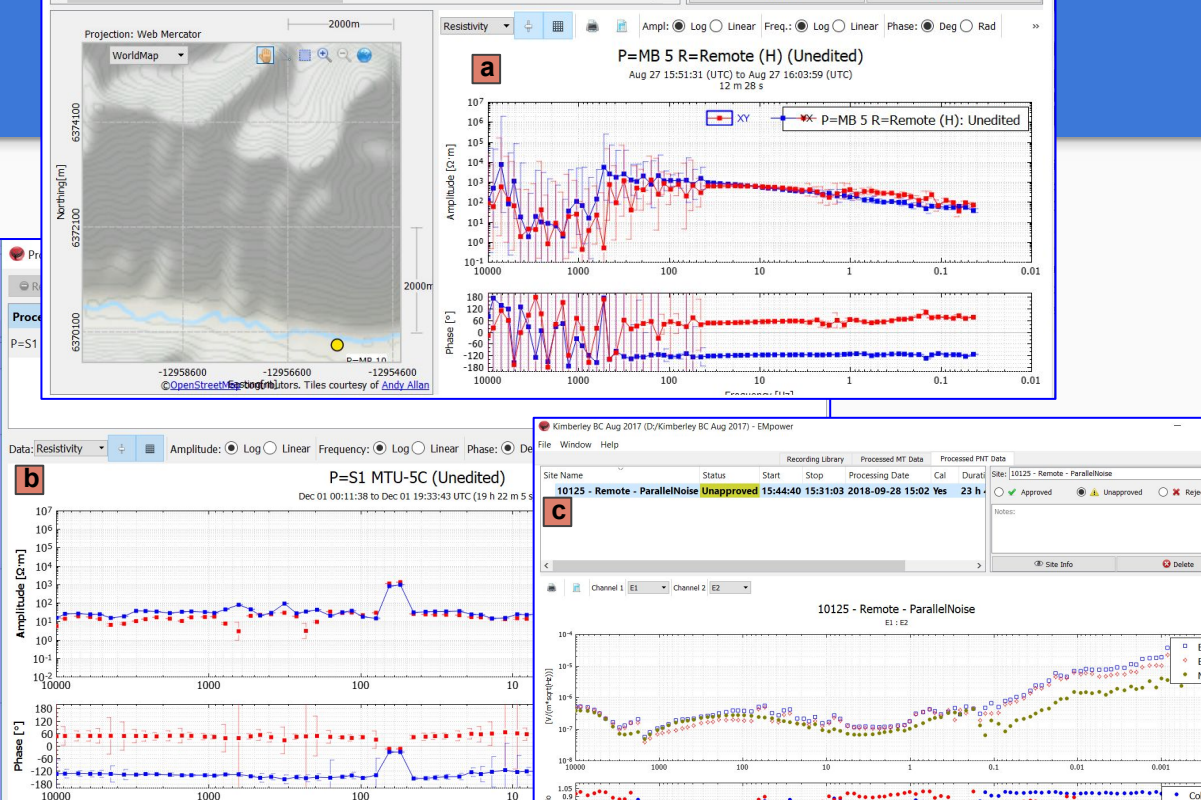


Toolbar Description

1. Error bars / Grid
 - Shows/hides error bars range
 - Grid icon scales the view to the error bars or to the plot
2. Print / Export CSV file
3. Amplitude (Log/Linear)
4. Frequency (Log/Linear)
5. Phase (Degrees/Radians)
6. Legend (Top/Bottom)

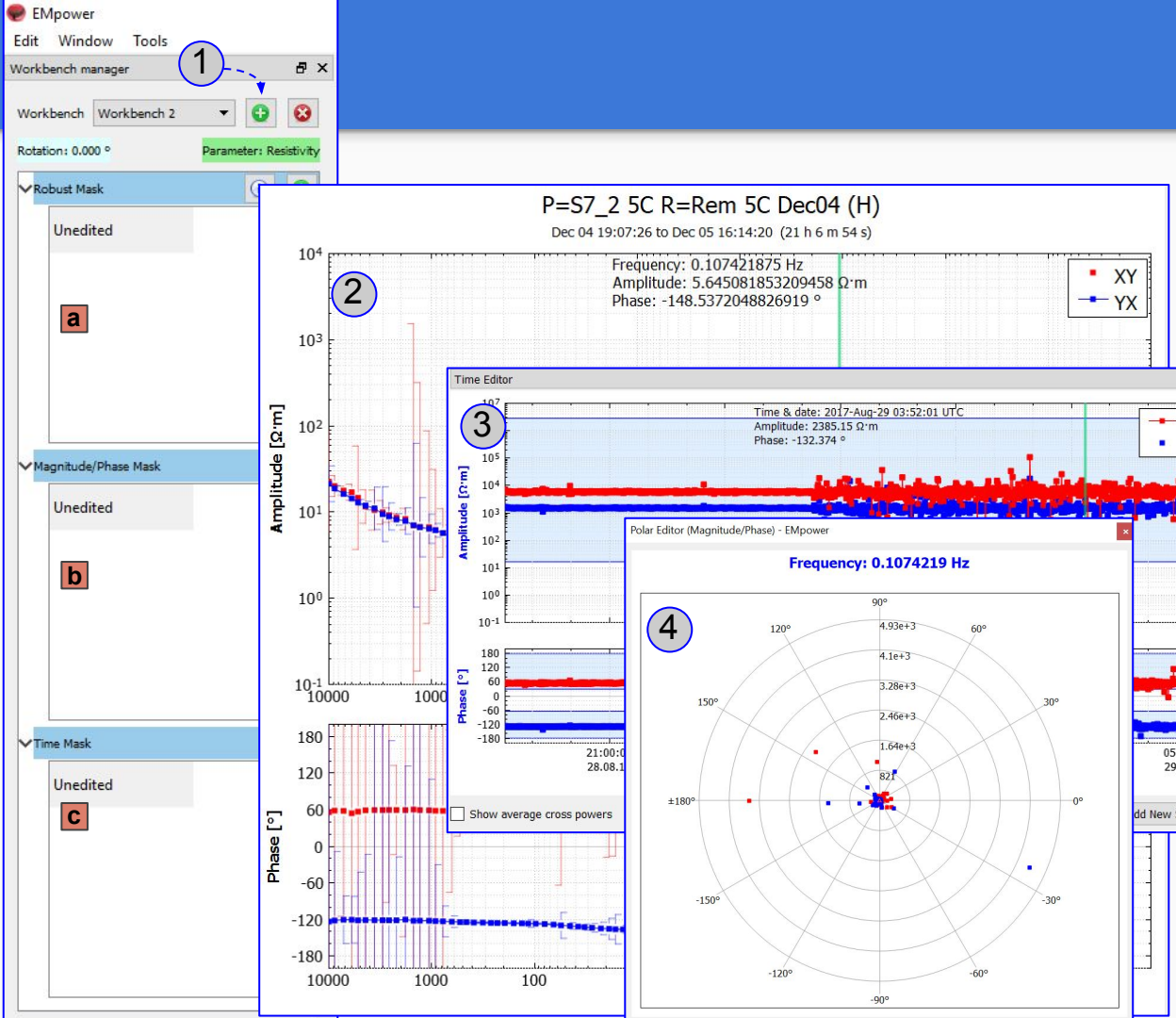
Toolbar available on:

- a Processed MT Data
- b Processing Queue
- c Processed PNT Data



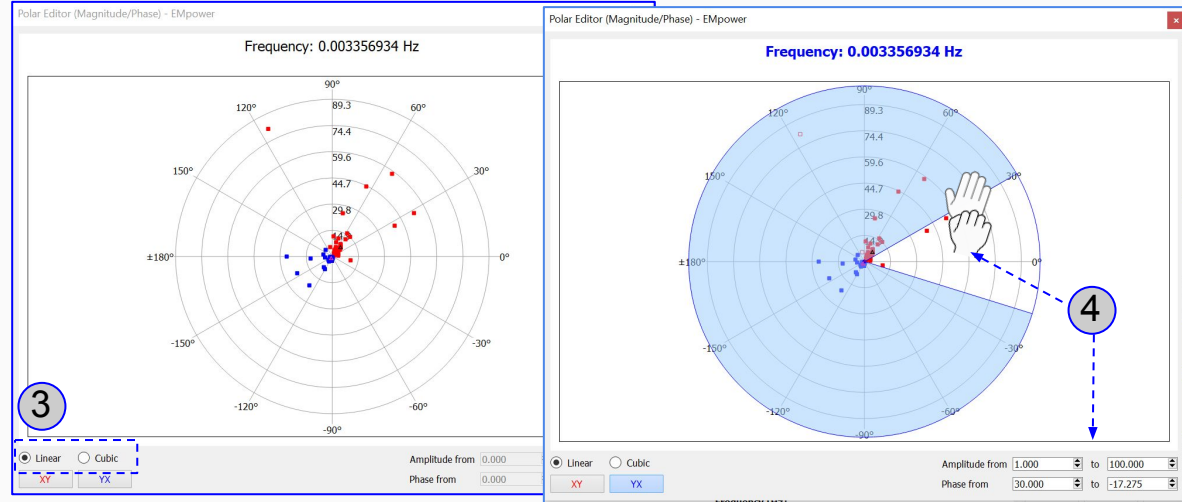
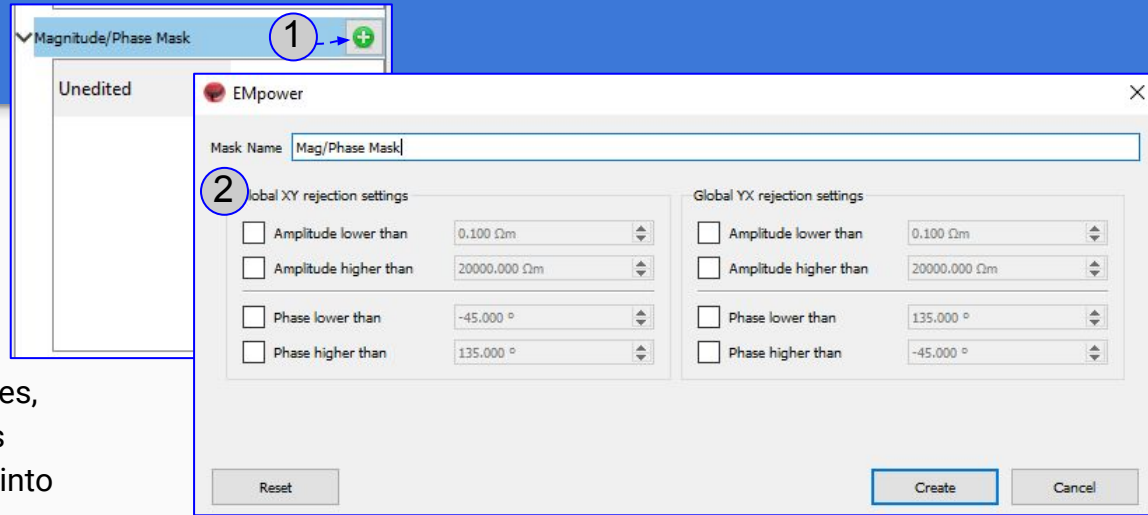
Edit Cross Powers

1. Workbench manager
 - Create a new workbench
 - Create masks for
 - a Robust
 - b Polar Editor (Magnitude/Phase editor)
 - c Time Editor
2. Site plot (select a frequency)
3. Time Editor (showing how data changes over time)
4. Polar Editor (Expressed in polar coordinates, with radius as a function of angle)



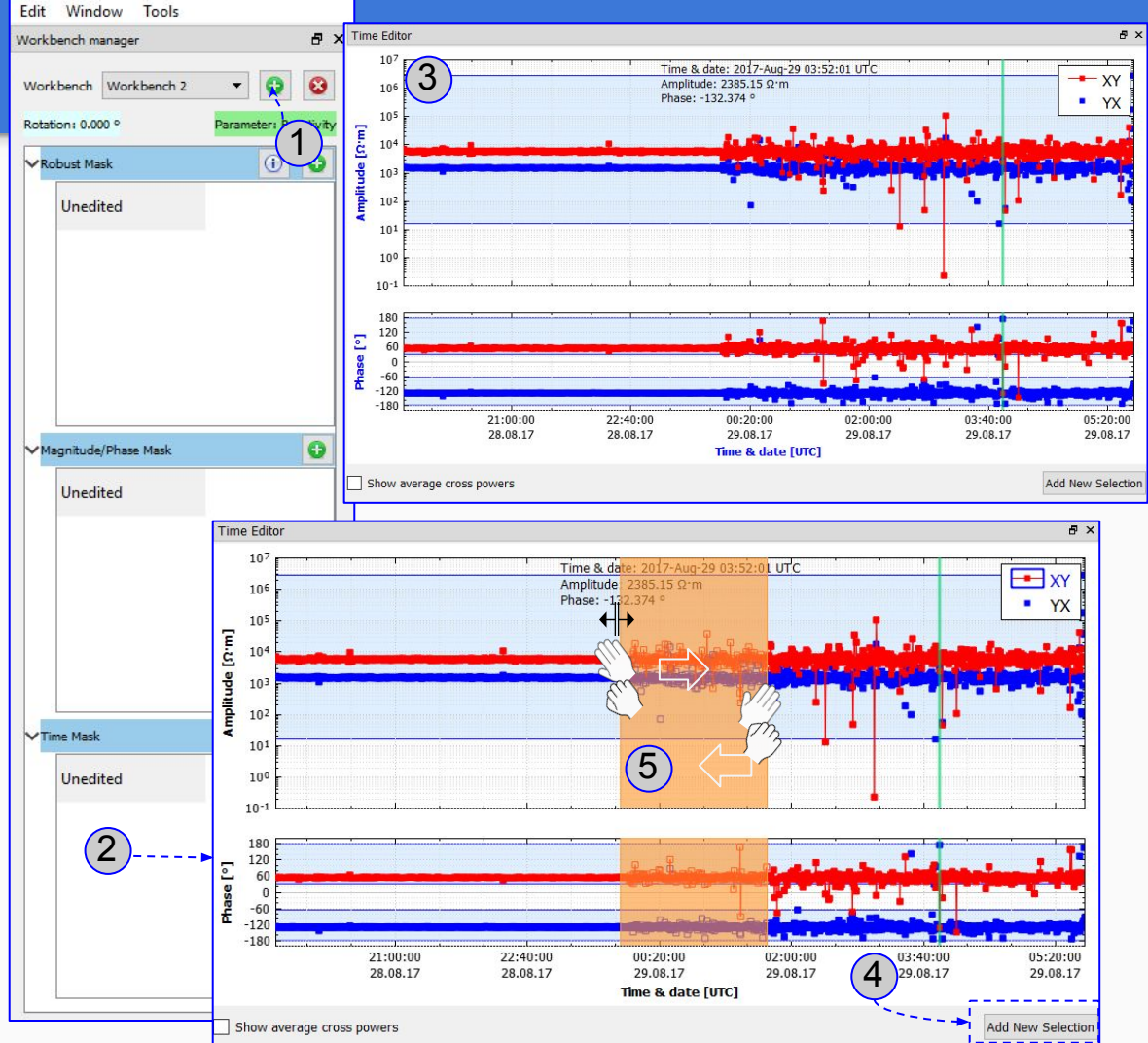
Polar Editor Features

1. After create a new Workbench
 - Create a new Mask for Polar Editor
 - Adjust the Global **XY** and **YX** rejection settings
2. Select between **Linear** and **Cubic** views
3. Click **XY** or **YX** button to switch between ranges, edit the ranges by either dragging the handles with your mouse or manually entering values into spin boxes.



Times Editor Features

1. Create a new **Workbench**
2. Create a new Mask for **Time Editor**
3. Click **XY** or **YX** button to switch between ranges.
4. Click **Add New Selection**
5. Click on the plot and select the range by dragging the handles to the left with your mouse.



Processed PNT Data

1. Export / Print the plot
2. Select the channels signal that will be displayed
3. Review the Noise

