



Installation Manual - EMpower

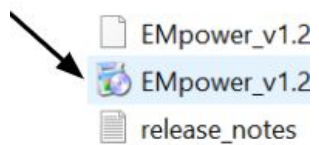
Requirements

- O/S 64 bits
- Windows, Linux or Apple

1. In Apple platform, drag and drop the installer onto the Applications directory to begin the installation.

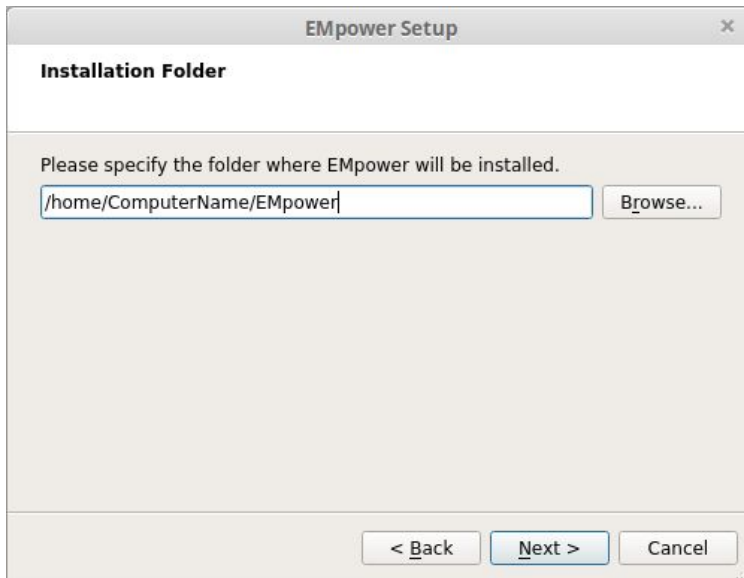


2. Run the installation EMpower setup and click next



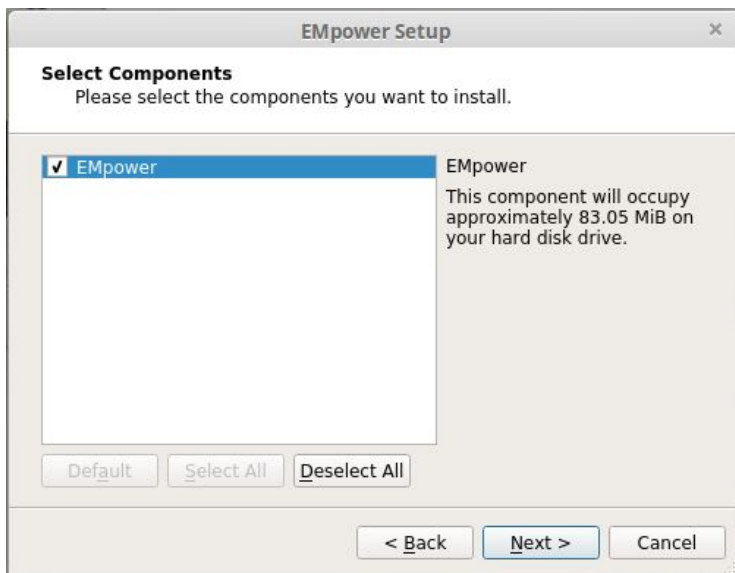
3. Installation Folder

- Use the default directory from the installer, or press Browse to select a different directory
- Click Next



4. The next window shows information about the hard drive space required

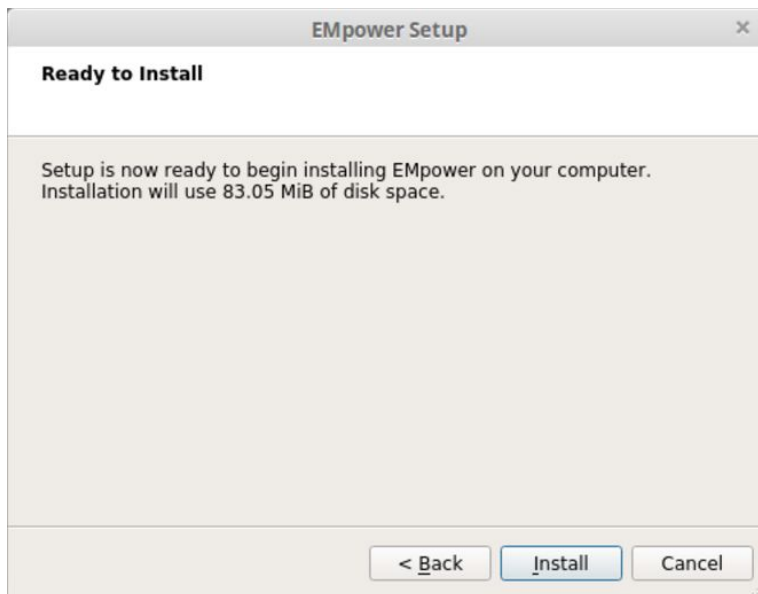
- Review the space requirement
- Click Next



5. In the License Agreement windows shows the terms and conditions
 - Read and select “I accept the license“ to proceed
 - Click Next



6. Click the Install button



**Windows installers do not have a back button.*

7. The software is now installed
 - Click Finish to close the installation program.

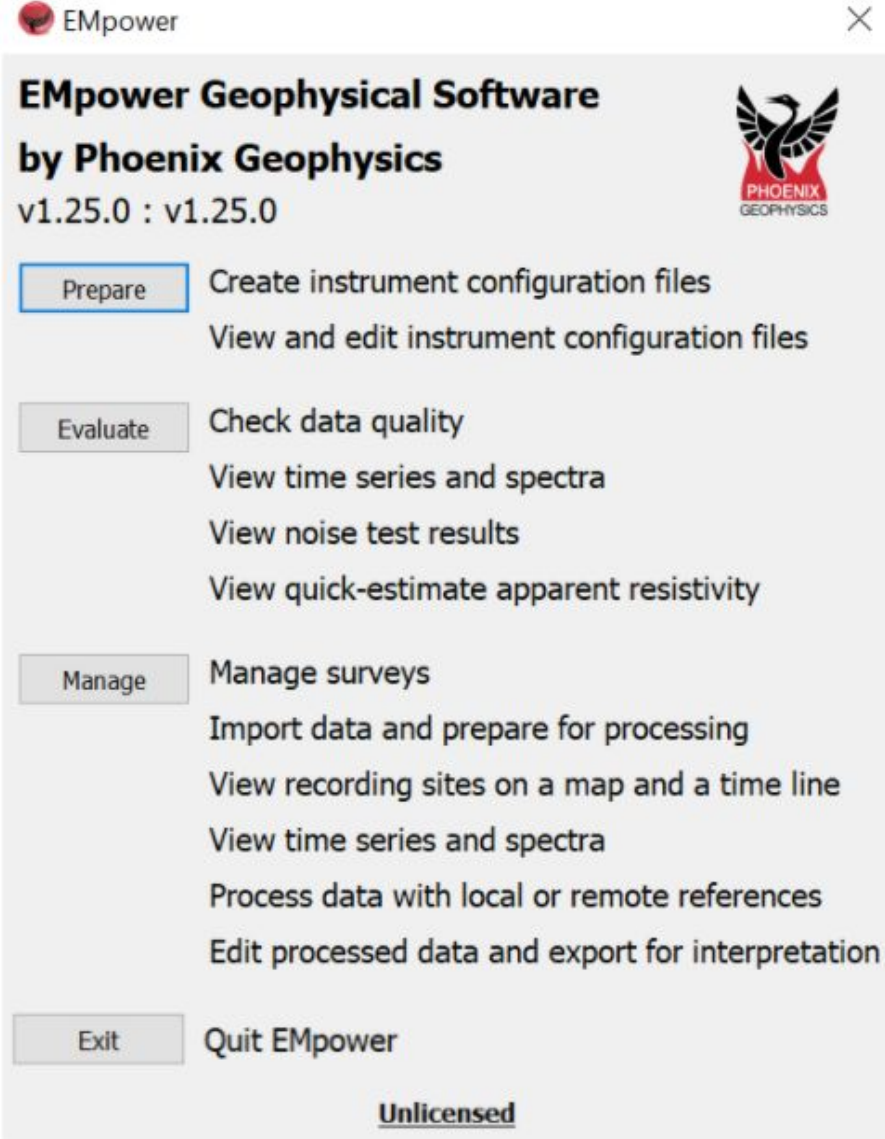


8. Start EMpower
 - Click the shortcut EMpower icon (Windows / Mac)



- In Linux, run the empower.sh script in the EMpower installation directory
- The legend "Unlicensed" will appear at the bottom of the EMpower window

9. The Prepare module can be used without an activation license code.
- The Evaluate and Manage modules can be used activating the EMpower license, (see EMpower - License activation document)



The screenshot shows the EMpower software interface. At the top left is the EMpower logo, and at the top right is a close button (X). The main title is "EMpower Geophysical Software by Phoenix Geophysics" with the version "v1.25.0 : v1.25.0". The Phoenix Geophysics logo is on the right. The main menu is organized into four sections: "Prepare", "Evaluate", "Manage", and "Exit".

Module	Functions
Prepare	Create instrument configuration files View and edit instrument configuration files
Evaluate	Check data quality View time series and spectra View noise test results View quick-estimate apparent resistivity
Manage	Manage surveys Import data and prepare for processing View recording sites on a map and a time line View time series and spectra Process data with local or remote references Edit processed data and export for interpretation
Exit	Quit EMpower

Unlicensed